

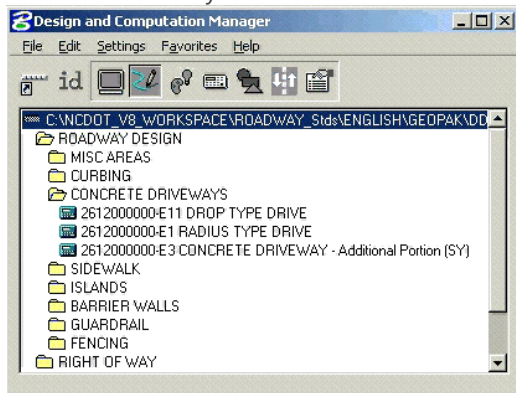
12_02 Additional Concrete Driveway Payitem

Question:

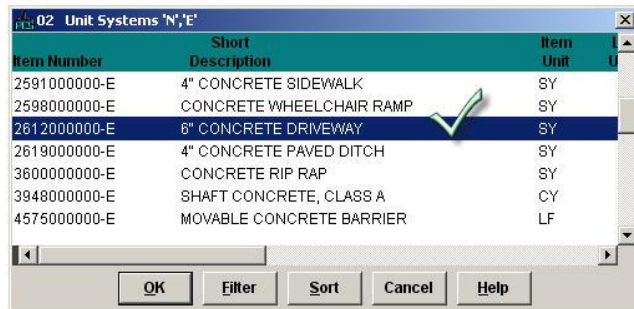
Is there a way to automate the design and computation for the additional concrete driveway area behind the standard driveway turnouts?

Answer:

Payitem **261200000-E3 CONCRETE DRIVEWAY - Additional Portion (SY)** has been added to the Payitem Design and Computation Manager. By double-clicking on this item, Roadway Designers can place a shape (not filled) in the area behind the driveway custom linestyle to be computed when driveways cross sidewalks. Additional quantities are needed to reconnect from the back of the sidewalk to existing concrete driveways.

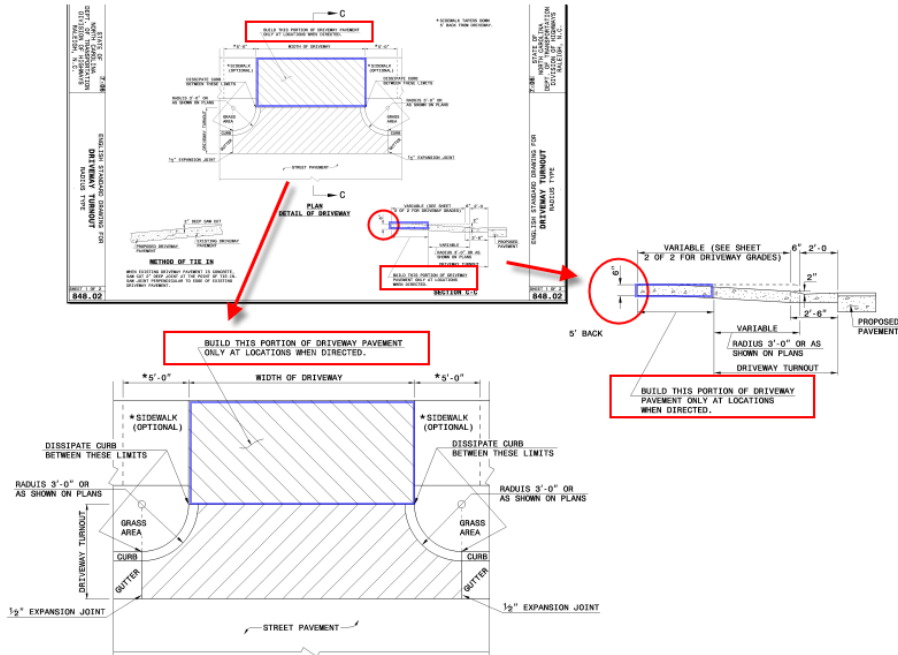


Checking with the 2006 Specifications Manual Section 848-4 (pg.8-36) and the Transport pay item list, both types of driveways (radius and drop types) as well as the addition portion are paid for as 6" Concrete Driveway by the squared yard.

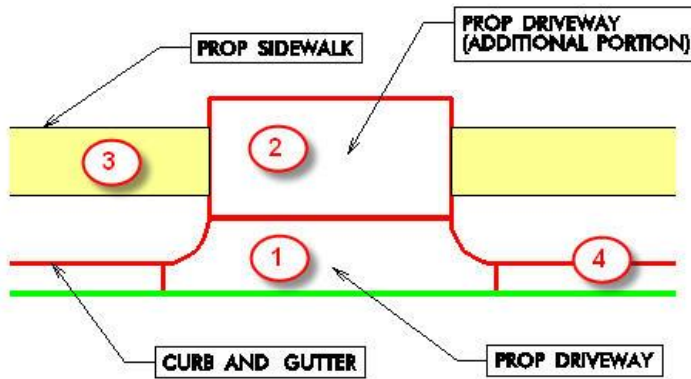


| Item Number | Short Description | Item Unit |
|--------------|--------------------------|-----------|
| 2591000000-E | 4" CONCRETE SIDEWALK | SY |
| 2598000000-E | CONCRETE WHEELCHAIR RAMP | SY |
| 2612000000-E | 6" CONCRETE DRIVEWAY | SY |
| 2619000000-E | 4" CONCRETE PAVED DITCH | SY |
| 3800000000-E | CONCRETE RIP RAP | SY |
| 3948000000-E | SHAFT CONCRETE, CLASS A | CY |
| 4575000000-E | MOVABLE CONCRETE BARRIER | LF |

As mentioned in the 2006 Roadway Standard Drawings (STD 848.02 and 848.03), "Build this portion of the driveway pavement only at locations when directed." The additional portion of the driveway is highlighted in blue.



Below is an example of how the Payitem Design and Computation Manager extracts the information from MicroStation.



Computation Results

| Item | Description | Quantity | Unit | Exp |
|------|---|----------|------|-------------------------------------|
| 1 | 2612000000-E1 RADIUS TYPE DRIVE | 10.5790 | SY | <input checked="" type="checkbox"/> |
| 2 | 2612000000-E3 CONCRETE DRIVEWAY - Additional Portion (SY) | 14.0600 | SY | <input checked="" type="checkbox"/> |
| 3 | 2591000000 4in CONCRETE SIDEWALK | 13.9500 | SY | <input checked="" type="checkbox"/> |
| 4 | 2549000000 2ft-6in CONCRETE CURB & GUTTER | 21.9000 | LF | <input checked="" type="checkbox"/> |

Export Format: **Comp Book**

Run: Phase: **DesignEstimate**

Note the relationship between the (2) additional portion of driveway and the (1) standard driveway area, (3) sidewalks, and (4) curb and gutters.